

## LOUISIANA CULTURAL DISTRICTS & THE LAFITTE CORRIDOR

In 2007, the Louisiana Legislature passed Act 298, creating the state's Cultural Districts program. It provides tax incentives to spark community revitalization based on cultural activity. As a result of this legislation, within designated Cultural Districts, sales of original, one-of-a-kind works of art are exempt from both state and local sales and use taxes. Also income and corporate franchise tax credits are allowed for eligible expenses for rehabilitation of owner-occupied or revenue generating structures in a Cultural District.

Friends of Lafitte Corridor applied in July 2008 for Cultural District status for the Lafitte Corridor because we believe that commerce based upon the creation and appreciation of art and of our cultural heritage is consistent with our vision of what the greenway should bring to the City of New Orleans. When the list of approved Cultural Districts were announced by the State in November 2008, we learned that the entire Lafitte Corridor is included in two of the 17 Cultural Districts declared within New Orleans. For more information on the Lafitte Greenway Cultural District, visit the FOLC Cultural Districts web page: <http://folc-nola.org/greenway/cultural-districts/>



CREDIT: T. TERWAY, C. LYDDY, S. LEURIG, MIT

## YOU CAN HELP MAKE IT HAPPEN:

- 1) Participate in the planning and design process
- 2) Help FOLC continue its mission to transform the Lafitte Corridor into New Orleans' next great public space
- 3) Stay informed about public meetings and developments by visiting the FOLC website: [www.folc-nola.org](http://www.folc-nola.org)

## CONTACT INFORMATION

Friends of Lafitte Corridor, PO Box 791727, New Orleans LA 70179-1727  
Info@folc-nola.org

**For more information, please visit our website [www.folc-nola.org](http://www.folc-nola.org).**

**Join our Facebook group: <http://www.facebook.com/folc.nola>**



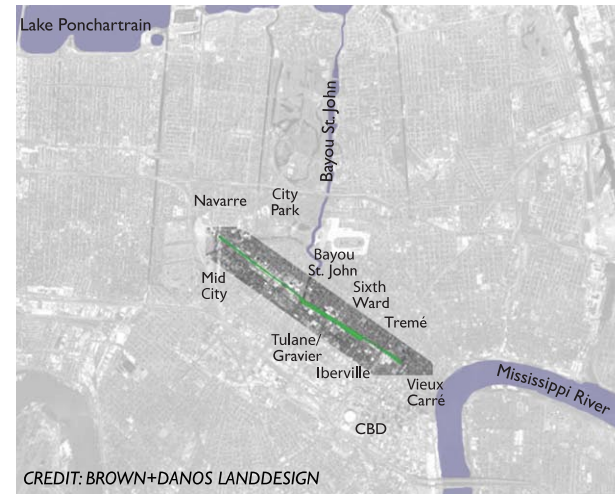
Friends of Lafitte Corridor seeks to preserve the open space of the Lafitte Corridor from the French Quarter to Canal Boulevard by advocating and facilitating the creation of a greenway with bicycling and pedestrian paths linking neighborhoods, cultural features, historic sites, retail areas and public spaces.

Friends of Lafitte Corridor is a 501(c)(3) organization.

APRIL 2011



**LAFITTE CORRIDOR  
GREENWAY AND  
REVITALIZATION PROJECT**  
Connecting healthy neighborhoods  
in the heart of New Orleans



CREDIT: BROWN+DANOS LANDESIGN

*The Lafitte Corridor: a three-mile long parcel of land extending from Basin St., at the back of the French Quarter, to Canal Boulevard in Lakeview.*

*With its roots as a transportation corridor that played a key role in the city's early development, the Lafitte Corridor links nine historic neighborhoods, eighteen schools, twenty six churches, and over a dozen public spaces, parks and recreational facilities.*

## A BRIEF HISTORY OF THE LAFITTE CORRIDOR

The Lafitte Corridor has been a significant transportation route since the founding of New Orleans. In 1794 the Carondelet Canal was completed (located in the stretch of the Lafitte Corridor from Bayou St. John to Basin Street) to provide a small but critical waterway for commercial ships entering New Orleans via Lake Pontchartrain and Bayou St. John. The Southern Railway constructed a rail line adjacent to this Canal in the early 20th Century. Passengers entering New Orleans on the Southern Railway disembarked at the terminal building located at Canal and Basin Streets. Today, with the exception of the Lemann Pool and Playground facilities, this three mile long public right of way remains largely abandoned and unused.

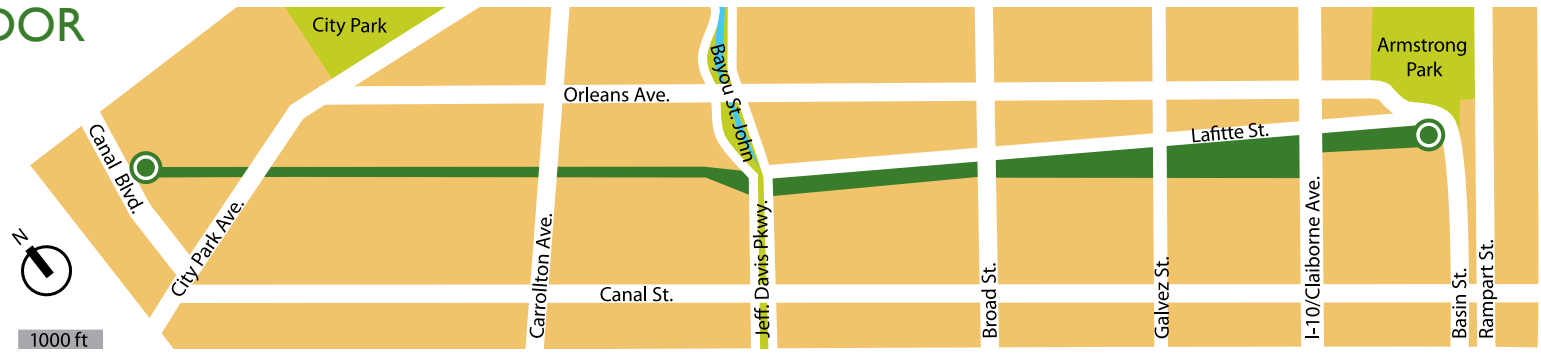


Photo of Carondelet Basin, ca. 1895  
The Historic New Orleans Collection, Accession #1979.313.91

# THE LAFITTE CORRIDOR

INDICATED IN DARK GREEN

Linking Lakeview to the Vieux Carré, Armstrong Park to City Park, the Lafitte Corridor is set to become New Orleans' first urban greenway.



**GREATER NEW ORLEANS  
FOUNDATION**

*For a vibrant region.*

## THE LAFITTE CORRIDOR AND SUSTAINABLE WATER DESIGN

In 2009, Friends of Lafitte Corridor, with a grant from the Environmental Fund of the Greater New Orleans Foundation, commissioned Waggoner & Ball Architects to develop concepts for integrating innovative approaches to sustainable groundwater and stormwater management into the planning and design of the greenway.

“Lafitte Greenway: Sustainable Water Design”—completed July 2010 (available for download at [www.folc-nola.org](http://www.folc-nola.org))—examines the unique urban geography of the Lafitte Corridor, and applies principles of retaining, storing and filtering stormwater, while replenishing and balancing groundwater, to:

- Increase the capacity of our existing pumping system to cope with major storm events
- Reduce street flooding
- Mitigate soil subsidence
- Reduce the discharge of urban pollutants into the environment
- Decrease energy consumption
- Capitalize on the amenity value of water to enhance quality of life

## THE GREENWAY: A VISION FOR THE LAFITTE CORRIDOR

Since early 2006, Friends of Lafitte Corridor (FOLC) has been working with Corridor-area neighborhood groups, governmental entities, and community stakeholders to craft a vision for the transformation of the Lafitte Corridor into the City of New Orleans's first urban greenway.

The GREENWAY will:

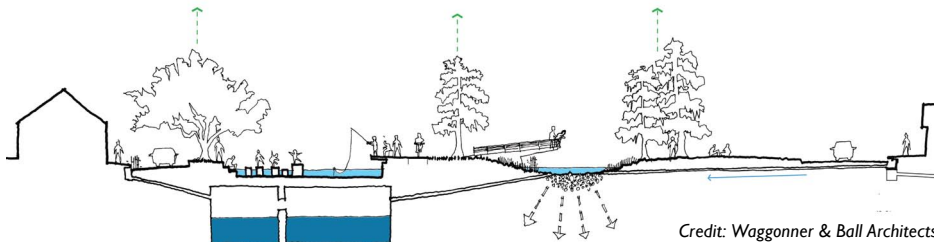
- Offer a continuous public open space amenity featuring a 3 mile long pathway for non-motorized transportation and recreation
- Join together key segments of the City's emerging pedestrian and bikeway network
- Provide a link between new and existing parks, playgrounds, recreational facilities and community centers, encouraging active living and promoting public health
- Connect locals and visitors to the history and culture of the Corridor-area neighborhoods; encouraging tourists to experience New Orleans beyond the French Quarter
- Create a new public open space amenity that can stimulate reinvestment in storm-damaged neighborhoods
- Promote a more sustainable, compact, and livable city by reducing dependence on the automobile and encouraging trail-oriented development



Lafitte Corridor, New Orleans, LA Existing Conditions



Millennium Park, Chicago, IL



Credit: Waggoner & Ball Architects

## THE LAFITTE CORRIDOR GREENWAY AND REVITALIZATION PROJECT

THE CITY OF NEW ORLEANS is preparing to implement this vision for the Lafitte Corridor with a two-step approach:

- 1) Build a safe, continuous trail and open space amenity: **THE GREENWAY**
- 2) Leverage public investment in the Greenway to stimulate trail-oriented development and reinvestment in the neighborhoods along the Corridor: **THE LAFITTE CORRIDOR REVITALIZATION PROJECT**

*Over \$8 million dollars in public and private funding has been committed for planning, design and implementation of the Greenway.*